



# Implant3D

Dental Implant Simulation

## CT Scan Protocol

Patient ID \_\_\_\_\_

Name \_\_\_\_\_

Birth Date \_\_\_\_\_

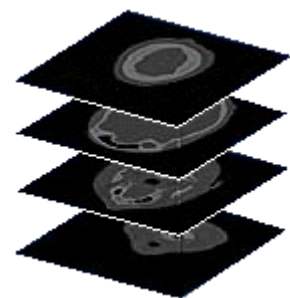
Sex  M  F

1. Make CT Scan with tilt angle equal to zero.
2. Create CD-ROM with **Axial only** in **DICOM 3.0** format.
3. Separate Upper Jaw and Lower Jaw scans in two CD-ROM or two folders in same CD-ROM.

Best Size Pictures: 512x512 pixels

Best Axials thickness: from 0.3 to 0.6 mm

Gantry Tilt = 0



**Please give this document to the Patient for Radiologist.**